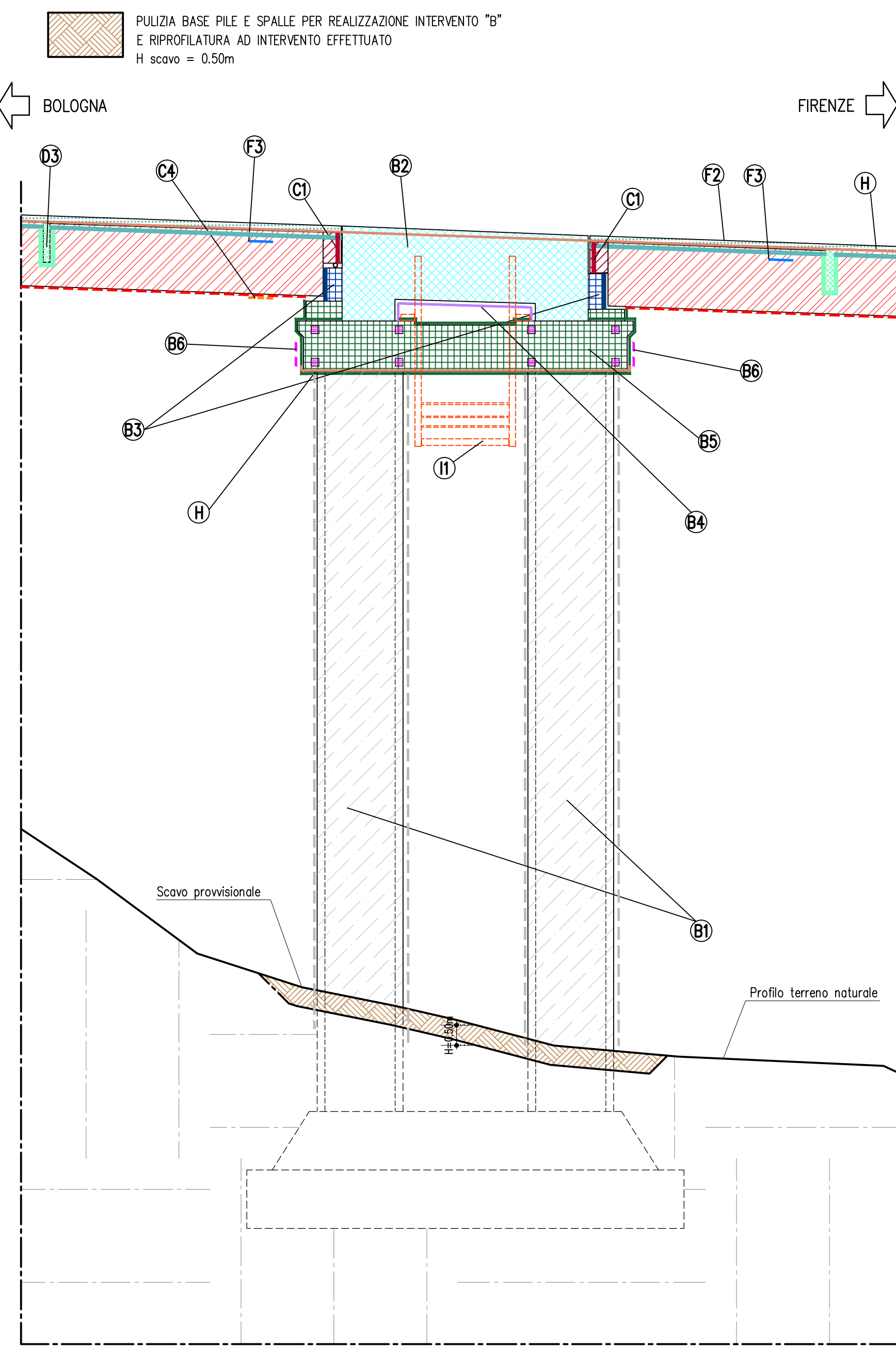
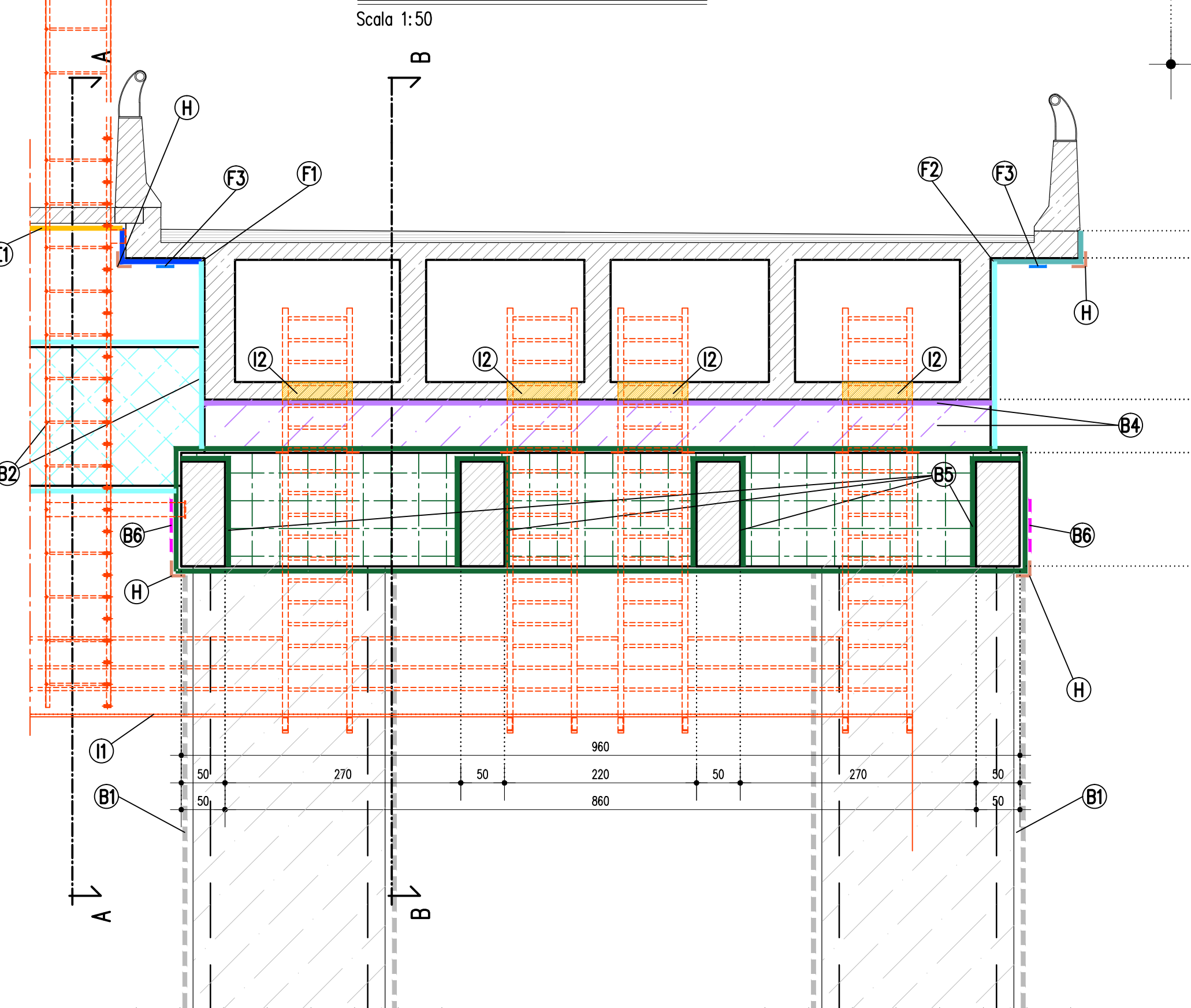


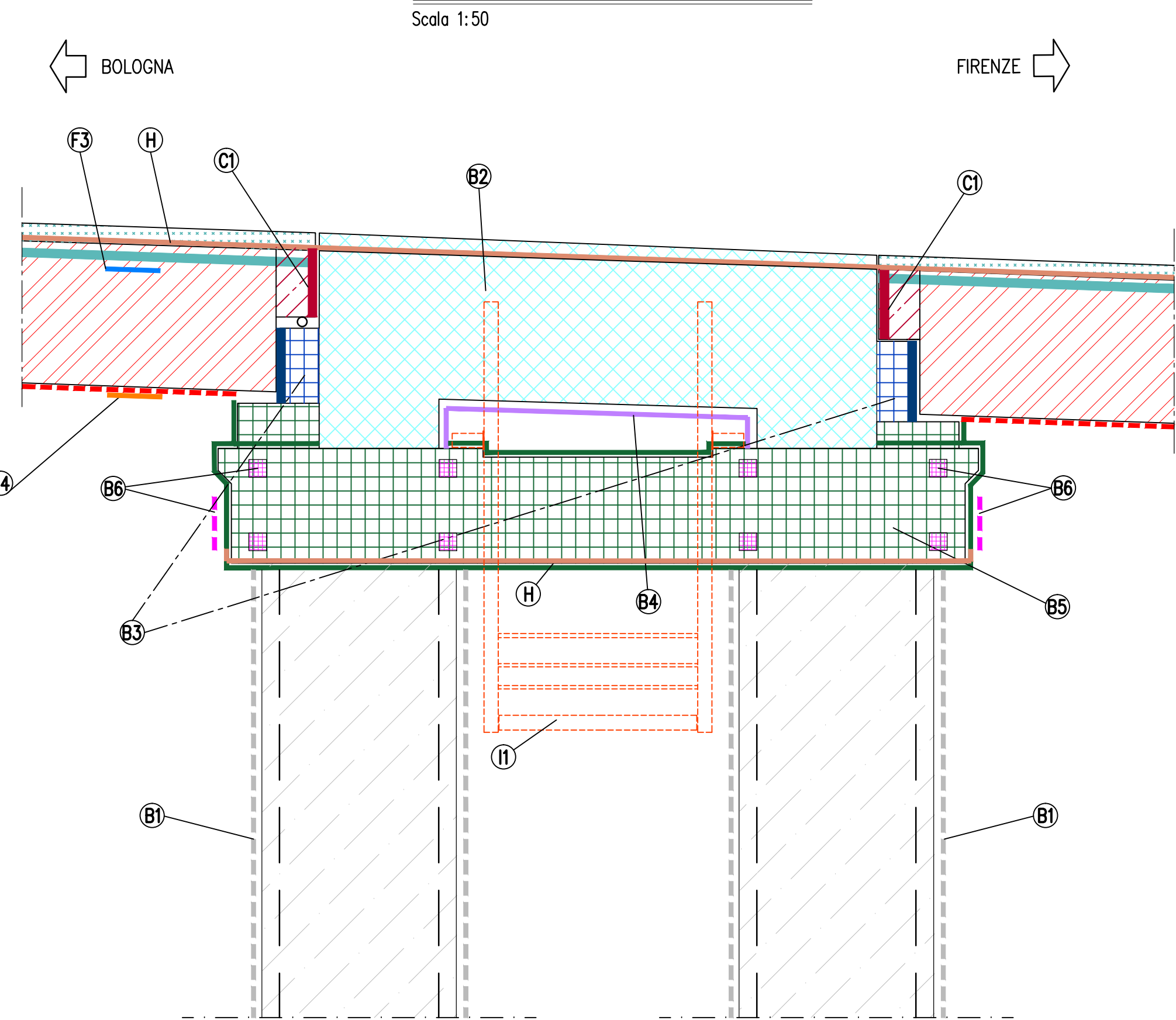
PROSPETTO LONGITUDINALE TIPO SU PILA 1:100



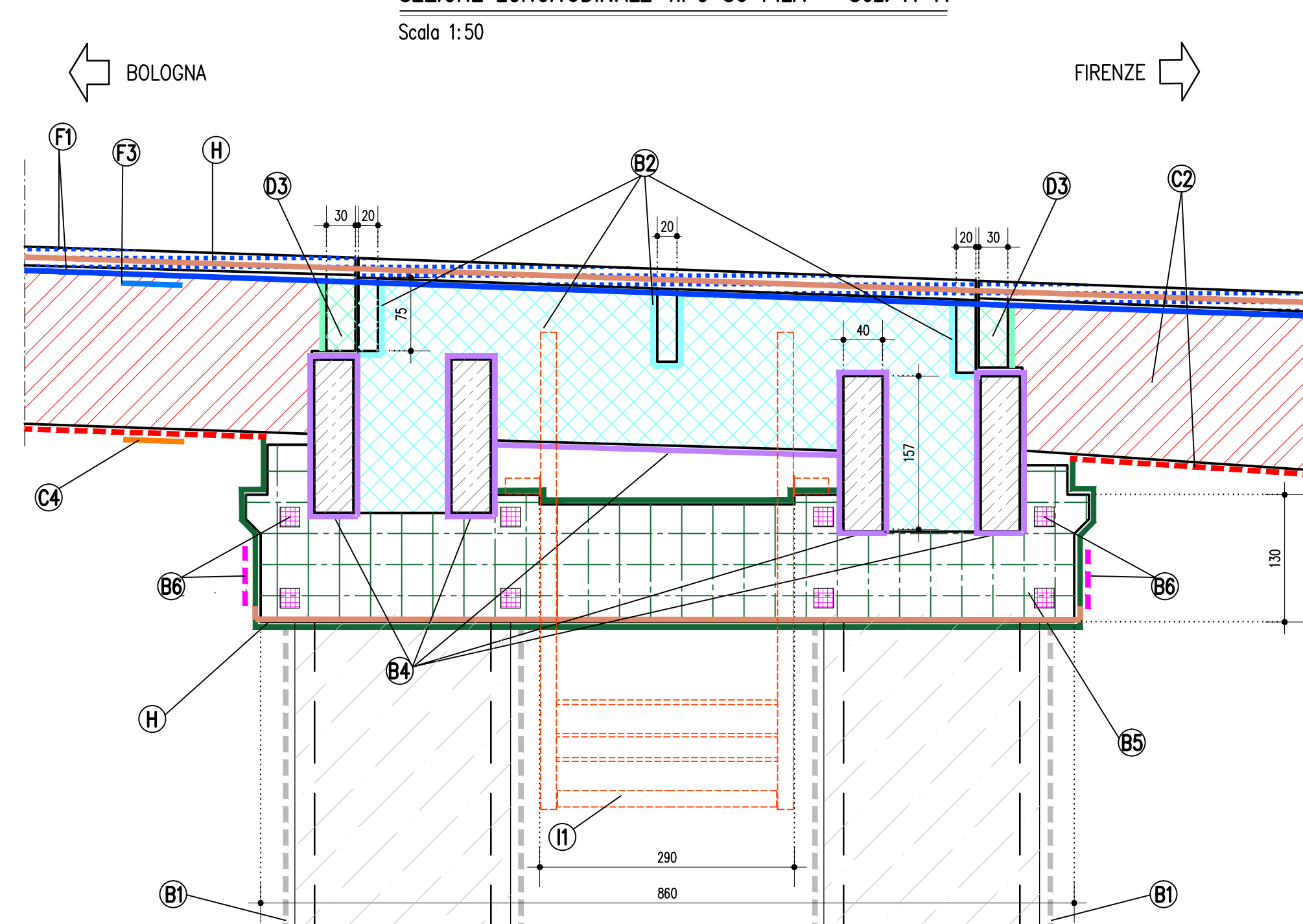
SEZIONE TRASVERSALE TIPO SU PILA



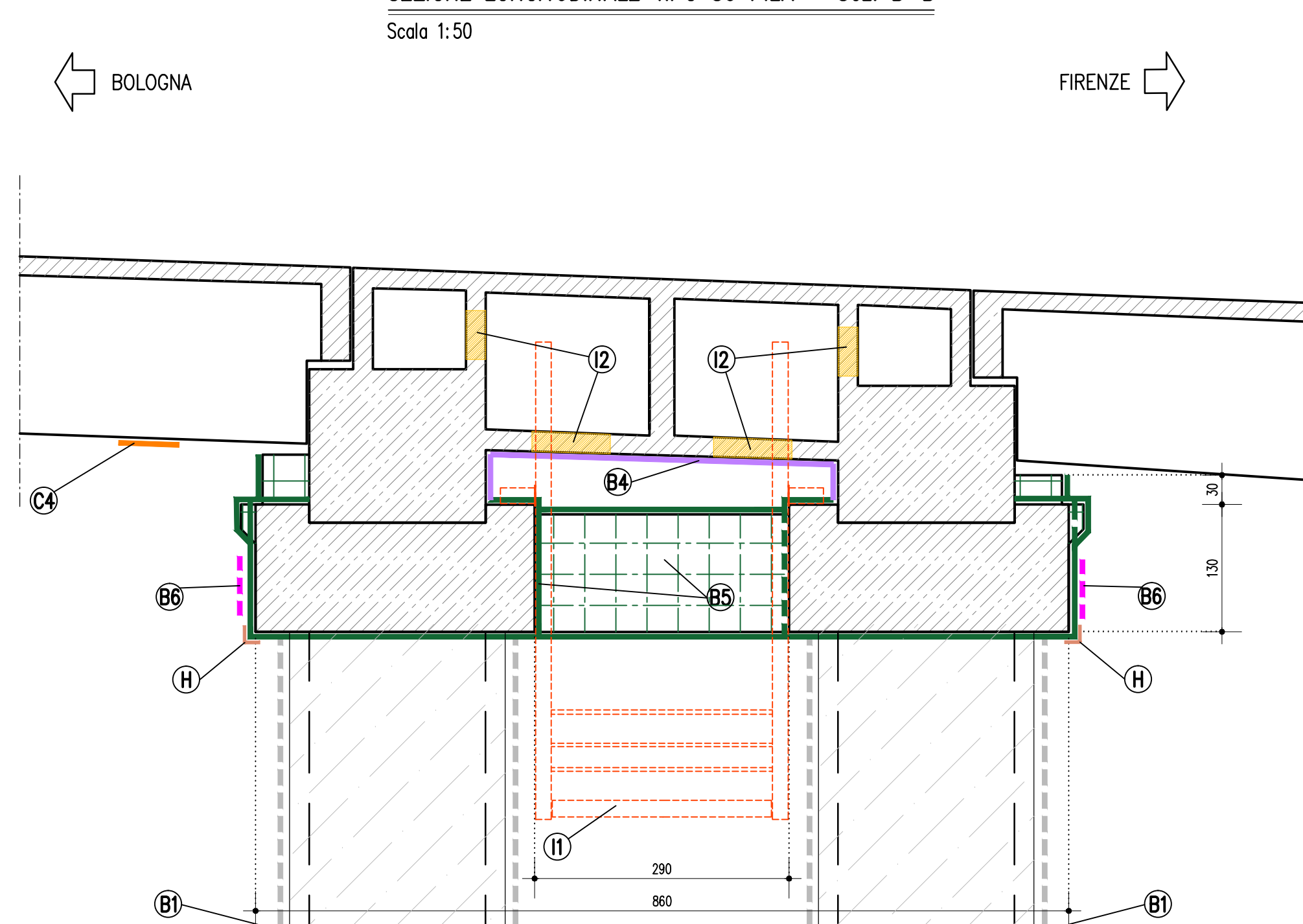
PROSPETTO LONGITUDINALE TIPO SU PILA



SEZIONE LONGITUDINALE TIPO SU PILA - Sez. A-A



SEZIONE LONGITUDINALE TIPO SU PILA - Sez. B-B



CARATTERISTICHE DEI MATERIALI

Technical specifications for materials including concrete, steel reinforcement, and geotextiles. Lists various types and their properties.

Table with 2 columns: DESCRIZIONE INTERVENTI (Intervention Description) and INTERVENTO (Intervention). Lists various types of interventions (A-D, E-I, F) and their specific technical details.

Project information block including 'autostrade per l'italia' logo, project name 'AUTOSTRADA (A1) : MILANO-NAPOLI', location 'TRATTO : VADO - FIRENZE NORD', and project details like 'PROGETTO ESECUTIVO' and 'UBICAZIONE INTERVENTI E RIPRISTINO TAVOLA 2 DI 2'.